

STANDARD ARRIVAL  
CHART INSTRUMENT (STAR)

TRANSITION ALTITUDE  
10 000 FT

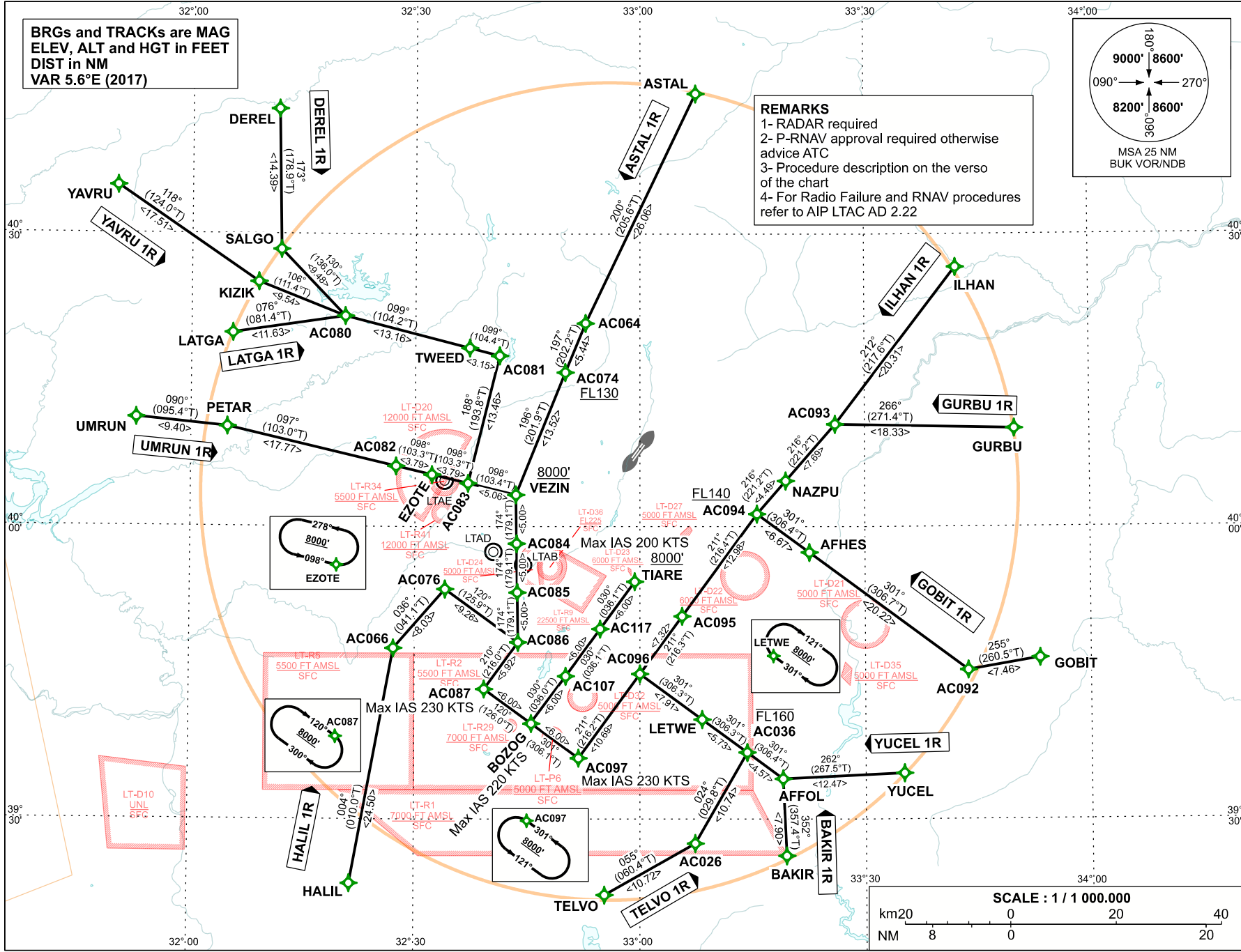
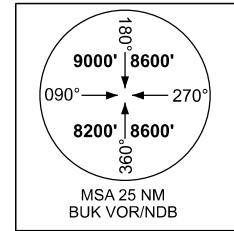
TWR : 118.1 - 257.8  
APP : 119.6 - 119.1

ANKARA/ESENOĞA  
RNAV (GNSS)  
RWY 03L/R

CHANGE: LT-D36 LIMITS, WAYPOINTS

BRGs and TRACKs are MAG  
ELEV, ALT and HGT in FEET  
DIST in NM  
VAR 5.6°E (2017)

REMARKS  
1- RADAR required  
2- P-RNAV approval required otherwise  
advice ATC  
3- Procedure description on the verso  
of the chart  
4- For Radio Failure and RNAV procedures  
refer to AIP LTAC AD 2.22



## ESENBOGA AIRPORT RNAV (GNSS) STAR RWY 03L/R

Designator	Abbreviated Description	Descent
ASTAL 1R	ASTAL-AC064[L]-AC074[F130+;L]-VEZIN[A8000+;L]-AC084-AC085-AC086[R]-AC087[K230-;L]-BOZOG[K220-;L]-AC107-AC117-TIARE[K200-;A8000+;L]	As cleared
ILHAN 1R	ILHAN-AC093[R]-NAZPU-AC094[F140+;L]-AC095-AC096-AC097[K230-;R]-BOZOG[K220-;R]-AC107-AC117-TIARE[K200-;A8000+;L]	As cleared
GURBU 1R	GURBU-AC093[L]-NAZPU-AC094[F140+;L]-AC095-AC096-AC097[K230-;R]-BOZOG[K220-;R]-AC107-AC117-TIARE[K200-;A8000+;L]	As cleared
GOBIT 1R	GOBIT-AC092[R]-AFHES-AC094[F140+;L]-AC095-AC096-AC097[K230-;R]-BOZOG[K220-;R]-AC107-AC117-TIARE[K200-;A8000+;L]	As cleared
YUCEL 1R	YUCEL-AFFOL[R]-AC036[F160-]-LETWE-AC096[L]-AC097[K230-;R]-BOZOG[K220-;R]-AC107-AC117-TIARE[K200-;A8000+;L]	As cleared
BAKIR 1R	BAKIR-AFFOL[L]-AC036[F160-]-LETWE-AC096[L]-AC097[K230-;R]-BOZOG[K220-;R]-AC107-AC117-TIARE[K200-;A8000+;L]	As cleared
TELVO 1R	TELVO-AC026[L]-AC036[F160-]-LETWE-AC096[L]-AC097[K230-;R]-BOZOG[K220-;R]-AC107-AC117-TIARE[K200-;A8000+;L]	As cleared
HALIL 1R	HALIL-AC066[R]-AC076[R]-AC086[R]-AC087[K230-;L]-BOZOG[K220-;L]-AC107-AC117-TIARE[K200-;A8000+;L]	As cleared
UMRUN 1R	UMRUN-PETAR[R]-AC082-EZOTE-AC083-VEZIN[A8000+;R]-AC084-AC085-AC086[R]-AC087[K230-;L]-BOZOG[K220-;L]-AC107-AC117-TIARE[K200-;A8000+;L]	As cleared
LATGA 1R	LATGA-AC080[R]-TWEED-AC081[R]-AC083[L]-VEZIN[A8000+;R]-AC084-AC085-AC086[R]-AC087[K230-;L]-BOZOG[K220-;L]-AC107-AC117-TIARE[K200-;A8000+;L]	As cleared
YAVRU 1R	YAVRU-KIZIK[L]-AC080[L]-TWEED-AC081[R]-AC083[L]-VEZIN[A8000+;R]-AC084-AC085-AC086[R]-AC087[K230-;L]-BOZOG[K220-;L]-AC107-AC117-TIARE[K200-;A8000+;L]	As cleared
DEREL 1R	DEREL-SALGO[L]-AC080[L]-TWEED-AC081[R]-AC083[L]-VEZIN[A8000+;R]-AC084-AC085-AC086[R]-AC087[K230-;L]-BOZOG[K220-;L]-AC107-AC117-TIARE[K200-;A8000+;L]	As cleared

Type	Fix identifier (Waypoint name)	Latitude	Longitude
FlyBy	VEZIN	40:03:18.06 N	032:43:28.24 E
FlyBy	TIARE	39:54:24.58 N	032:59:19.47 E
FlyBy	BOZOG	39:39:50.95 N	032:45:33.59 E
FlyBy	AC084	39:58:17.75 N	032:43:34.38 E
FlyBy	AC085	39:53:17.43 N	032:43:40.50 E
FlyBy	AC086	39:48:10.32 N	032:43:46.74 E
FlyBy	AC087	39:43:22.78 N	032:39:16.16 E
FlyBy	AC095	39:50:51.65 N	033:05:36.92 E
FlyBy	AC096	39:44:57.18 N	033:00:00.40 E
FlyBy	AC097	39:36:18.76 N	032:51:50.42 E
FlyBy	AC107	39:44:42.34 N	032:50:08.24 E
FlyBy	AC117	39:49:33.55 N	032:54:43.53 E
FlyBy	AC064	40:20:53.96 N	032:52:43.67 E
FlyBy	AC074	40:15:51.52 N	032:50:02.42 E
FlyBy	AC093	40:10:30.64 N	033:26:03.57 E
FlyBy	NAZPU	40:04:42.95 N	033:19:27.16 E
FlyBy	AC094	40:01:19.93 N	033:15:36.40 E
FlyBy	AFHES	39:57:22.47 N	033:22:35.28 E
FlyBy	AC092	39:45:19.75 N	033:43:40.76 E
FlyBy	AC026	39:27:33.16 N	033:07:20.77 E
FlyBy	LETWE	39:40:16.36 N	033:08:16.66 E
FlyBy	AC036	39:36:52.77 N	033:14:15.08 E
FlyBy	AFFOL	39:34:10.08 N	033:19:00.71 E

Type	Fix identifier (Waypoint name)	Latitude	Longitude
FlyBy	EZOTE	40:05:20.97 N	032:32:15.54 E
FlyBy	AC076	39:53:36.93 N	032:34:02.65 E
FlyBy	AC082	40:06:13.30 N	032:27:27.10 E
FlyBy	AC066	39:47:33.37 N	032:27:11.31 E
FlyBy	AC083	40:04:28.44 N	032:37:03.87 E
FlyBy	AC081	40:17:33.50 N	032:41:15.06 E
FlyBy	TWEED	40:18:20.73 N	032:37:15.53 E
FlyBy	AC080	40:21:36.31 N	032:20:34.97 E
FlyBy	SALGO	40:28:26.00 N	032:11:58.00 E
FlyBy	LATGA	40:19:53.00 N	032:05:32.00 E
FlyBy	ASTAL	40:44:26.00 N	033:07:28.00 E
FlyBy	ILHAN	40:26:38.00 N	033:42:13.00 E
FlyBy	GURBU	40:10:06.58 N	033:49:58.00 E
FlyBy	GOBIT	39:46:34.07 N	033:53:12.95 E
FlyBy	YUCEL	39:34:44.00 N	033:35:07.00 E
FlyBy	BAKIR	39:26:16.00 N	033:19:28.00 E
FlyBy	TELVO	39:22:16.00 N	032:55:18.00 E
FlyBy	HALIL	39:23:26.00 N	032:21:28.00 E
FlyBy	DEREL	40:42:50.00 N	032:11:36.00 E
FlyBy	PETAR	40:10:16.00 N	032:04:53.00 E
FlyBy	UMRUN	40:11:09.89 N	031:52:40.52 E
FlyBy	KIZIK	40:25:06.00 N	032:08:58.00 E
FlyBy	YAVRU	40:34:56.00 N	031:49:58.00 E

**Note1:** At first contact with ESENBOGA APP report if unable to comply the RNAV procedure.

**Note2:** At first contact with ESENBOGA APP report only call sign.

**Note3:** IAS 200 Kts on base leg/closing heading to final approach up to 12 NM to touchdown. IAS 180 Kts on final approach course within 12 NM to 8 NM to touchdown. IAS 170 Kts on final approach course within 8 NM to 6 NM to touchdown. IAS 160 Kts on final approach course within 6 NM to 4 NM to touchdown

**Note4:** These speeds are applied for ATC separation purposes and are mandatory. All speed restrictions are to be flown as accurately as possible. Aircraft unable to conform to these speeds should inform ATC and state what speeds to be used